

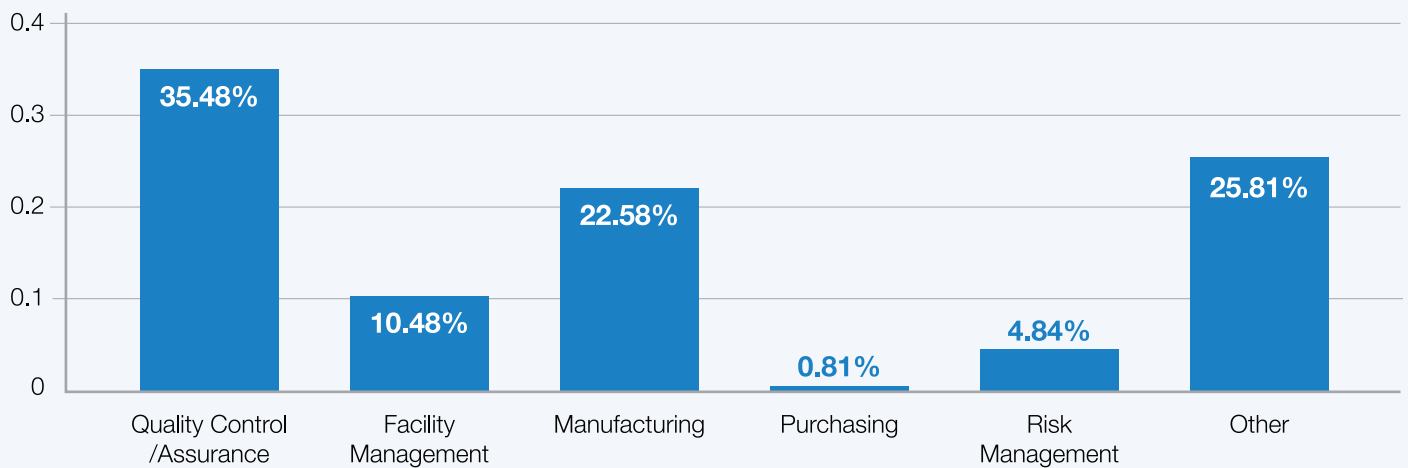
# WHAT YOU NEED TO KNOW ABOUT CLEANROOM MOPPING

## USER SURVEY RESULTS AND OBSERVATIONS

At FG Clean Wipes, we strive to make continuous improvements to our customer's contamination control capabilities. Mopping is the most important to reimagine first because it is an essential part of surface cleaning in critical environments but the efficiency of tools and processes for mopping are often overlooked.

So we funded a third-party survey to uncover the unmet needs that cleanroom professionals share in cleanroom mopping. We think it important for us to share this information with you because it sheds light on major efficiencies and improvements you may want but aren't aware that they're available.

A total of 135 respondents completed the survey. They come from wide-ranging industries involving critical environments.



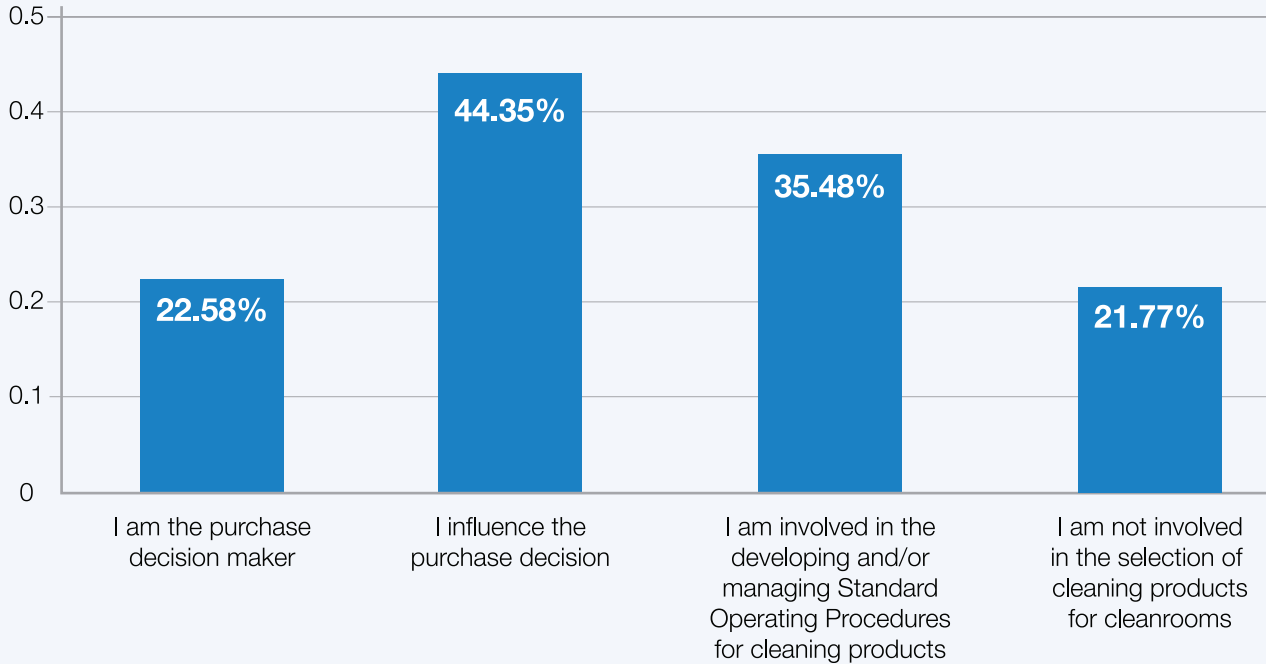
### Visionary Cleaning System

Saturix is a complete system for critical cleaning featuring innovative carts, mops and wipes backed by 100 years of cleaning experience. With focused product selection, it's easy to find exactly what you need right now.

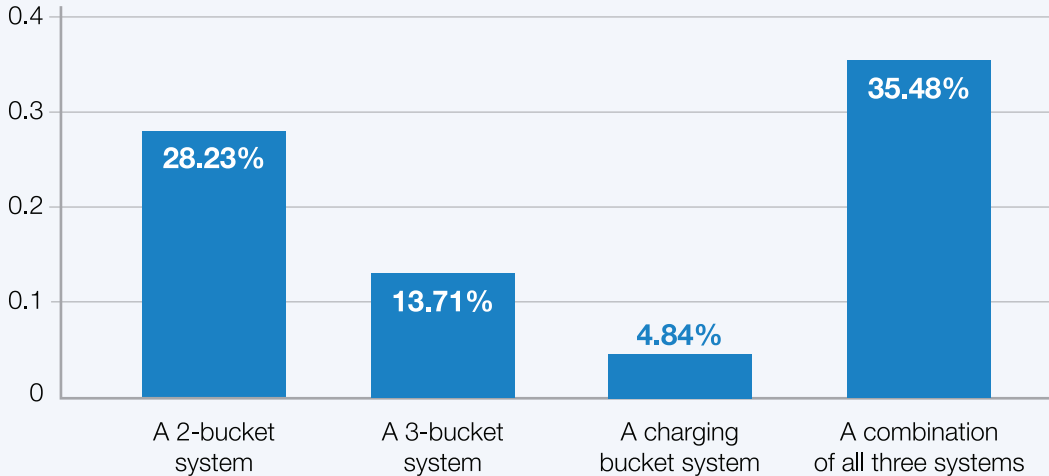
To learn more about our products, visit us online at [Saturix.com](https://www.saturix.com) or contact us at +1 (413) 598-8344 or [info@saturix.com](mailto:info@saturix.com)



The majority of respondents are involved in purchasing equipment for cleanroom mopping or development of SOPs.



Two- or Three-Bucket systems are currently widely adopted for cleanroom mopping.



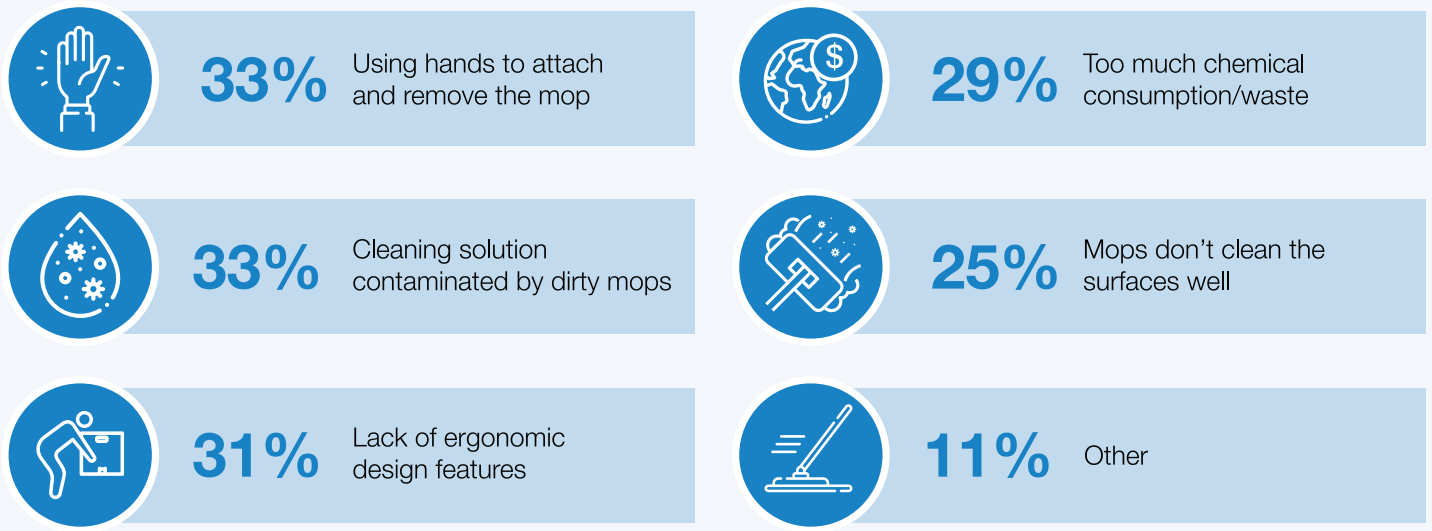
**Visionary Cleaning System**

Saturix is a complete system for critical cleaning featuring innovative carts, mops and wipes backed by 100 years of cleaning experience. With focused product selection, it's easy to find exactly what you need right now.

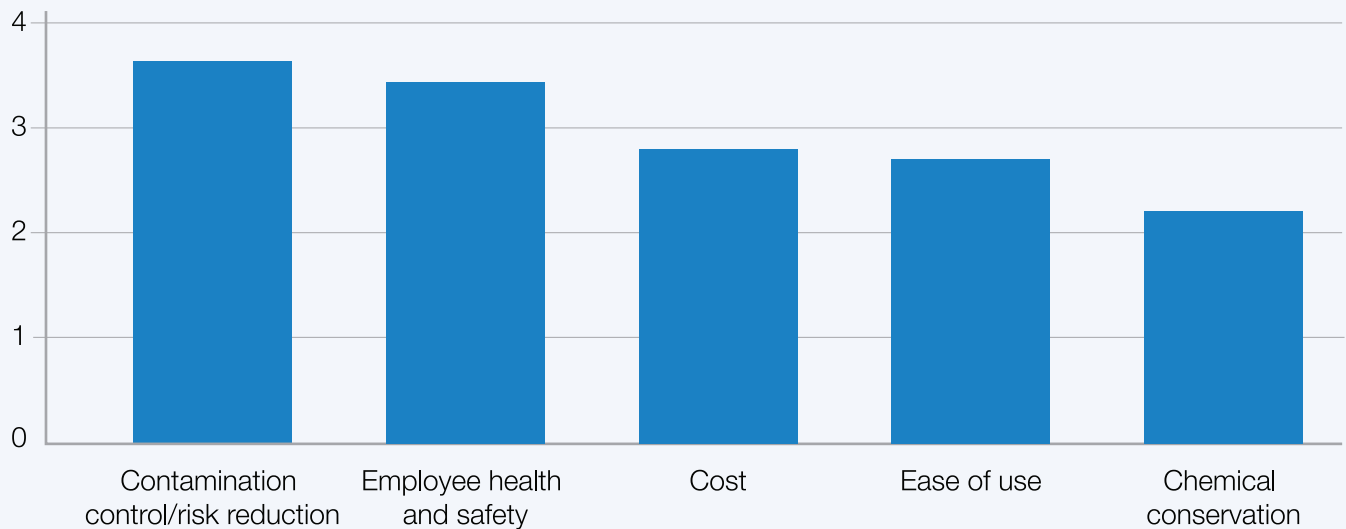
To learn more about our products, visit us online at [Saturix.com](http://Saturix.com) or contact us at +1 (413) 598-8344 or [info@saturix.com](mailto:info@saturix.com)



The respondents identified major shortcomings of their current mopping systems.



If choosing a new mopping system, these would be the most important criteria.



**Visionary Cleaning System**

Saturix is a complete system for critical cleaning featuring innovative carts, mops and wipes backed by 100 years of cleaning experience. With focused product selection, it's easy to find exactly what you need right now.

To learn more about our products, visit us online at [Saturix.com](https://www.saturix.com) or contact us at +1 (413) 598-8344 or [info@saturix.com](mailto:info@saturix.com)





## Key Takeaways

Although most respondents deemed their current mopping systems adequate, they expressed major complaints that are inherent to two- and three-bucket systems they are using today. With these designs, you will have to use your hands to replace dirty mops and cleaning solution will always become contaminated by dirty mops. The respondents were also concerned about the lack of ergonomics which will directly undermine worker safety. Chemical waste cannot be ignored either as it has a negative impact on both your bottom line as well as the environment.

**There is a cleaning system available that addresses all the unmet needs and meets all major criteria for a change, but many people aren't aware of it.**

The Saturix Cleaning System lowers the entire mopping risk profile by **80%**<sup>1</sup> with its hands-free mop attachment/removal and precision dosing. This reduction covers general contamination control risk and employee health and safety by limiting their exposure and enhancing ergonomics.

Our advanced, high performance microfiber mops are proven to remove **99.9%**<sup>2</sup> of particulate residue down to .1 micron to provide additional insurance to any environment. The superior absorption and release allows those mops to offer up to 47% higher coverage per mop.<sup>3</sup> This further reduces employee safety risk by decreasing all repetitive motions associated with saturating, wringing and changing mops.

Finally our precision dosing technology not only allows users to always clean with clean chemical but save chemical usage by **90%**.<sup>1</sup>

**If you're anything like the 135 respondents of this survey, you do important work in a critical facility. Don't settle for "good enough."**

[Contact Us to Start a Free Trial](#)

[More Information](#)

<sup>1</sup> Based on internal analysis of 5,000 ft<sup>2</sup> ISO 7 facility.

<sup>2</sup> Based on 3rd party testing

<sup>3</sup> Based on 3rd party lab testing comparing Saturix mops to leading competitor mops

To learn more about our products, visit us online at [Saturix.com](https://www.saturix.com) or contact us at +1 (413) 598-8344 or [info@saturix.com](mailto:info@saturix.com)

